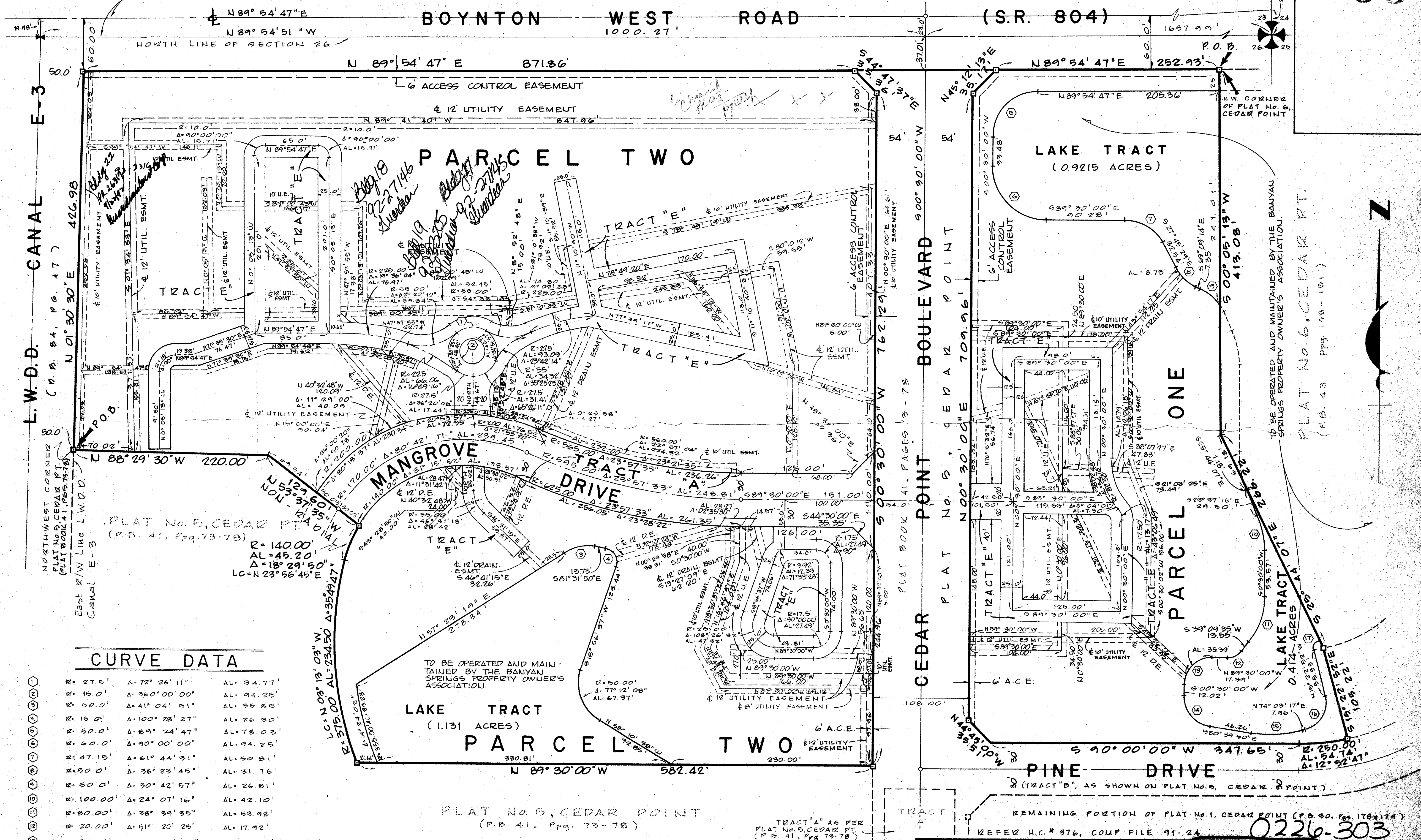


45/169

A PLANNED UNIT DEVELOPMENT IN COUNTRY CLUB TRAIL
PLAT NO. 7, CEDAR POINT
 SHEET 2 OF 2

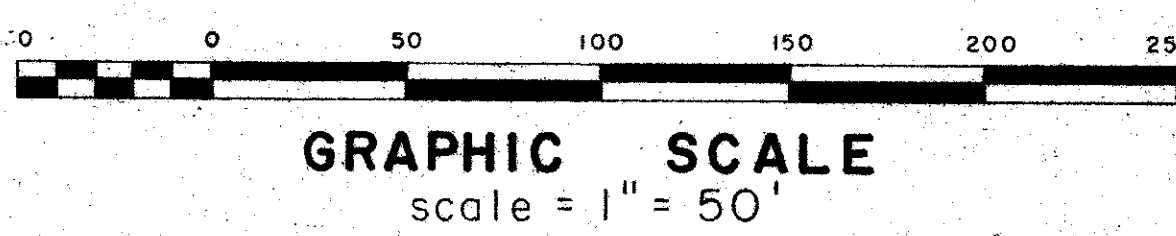
169

NOTE: CENTER LINE & SECTION LINE ARE NOT PARALLEL.



CURVE DATA

R= 27.5'	Δ= 72° 26' 11"	AL= 34.77'
R= 15.0'	Δ= 360° 00' 00"	AL= 94.25'
R= 50.0'	Δ= 41° 04' 51"	AL= 35.85'
R= 15.9'	Δ= 100° 28' 27"	AL= 26.30'
R= 50.0'	Δ= 89° 24' 47"	AL= 78.03'
R= 60.0'	Δ= 90° 00' 00"	AL= 94.25'
R= 47.15'	Δ= 61° 44' 31"	AL= 50.81'
R= 50.0'	Δ= 36° 23' 45"	AL= 31.76'
R= 50.0'	Δ= 30° 42' 57"	AL= 26.81'
R= 100.00'	Δ= 24° 07' 16"	AL= 42.10'
R= 80.00'	Δ= 38° 39' 35"	AL= 53.98'
R= 20.00'	Δ= 51° 20' 25"	AL= 17.92'
R= 30.00'	Δ= 90° 00' 00"	AL= 47.12'
R= 35.00'	Δ= 81° 09' 50"	AL= 49.58'
R= 130.00'	Δ= 25° 16' 54"	AL= 67.36'
R= 30.00'	Δ= 89° 26' 04"	AL= 46.83'
R= 7.36'	Δ= 95° 59' 30"	AL= 12.34'



Field Book No. Pg.	ROBERT E. OWEN & ASSOCIATES, INC.	Job No. 81-1106
Design	ENGINEERS - PLANNERS - SURVEYORS	Scale 1" = 50'
Drawn R. BUSUTIL	WEST PALM BEACH FLORIDA	Date AUG., 1981
Checked P. KRICK		Sheet 2
		of 2
		File No. BF-2314-C

PLAT NO. 7
of
CEDAR POINT

0226-303

TO BE OPERATED AND MAINTAINED BY THE BANYAN SPRINGS PROPERTY OWNER'S ASSOCIATION.
 PLAT No. 6, CEDAR PT.
 (P.B. 43 Pgs. 148-151)